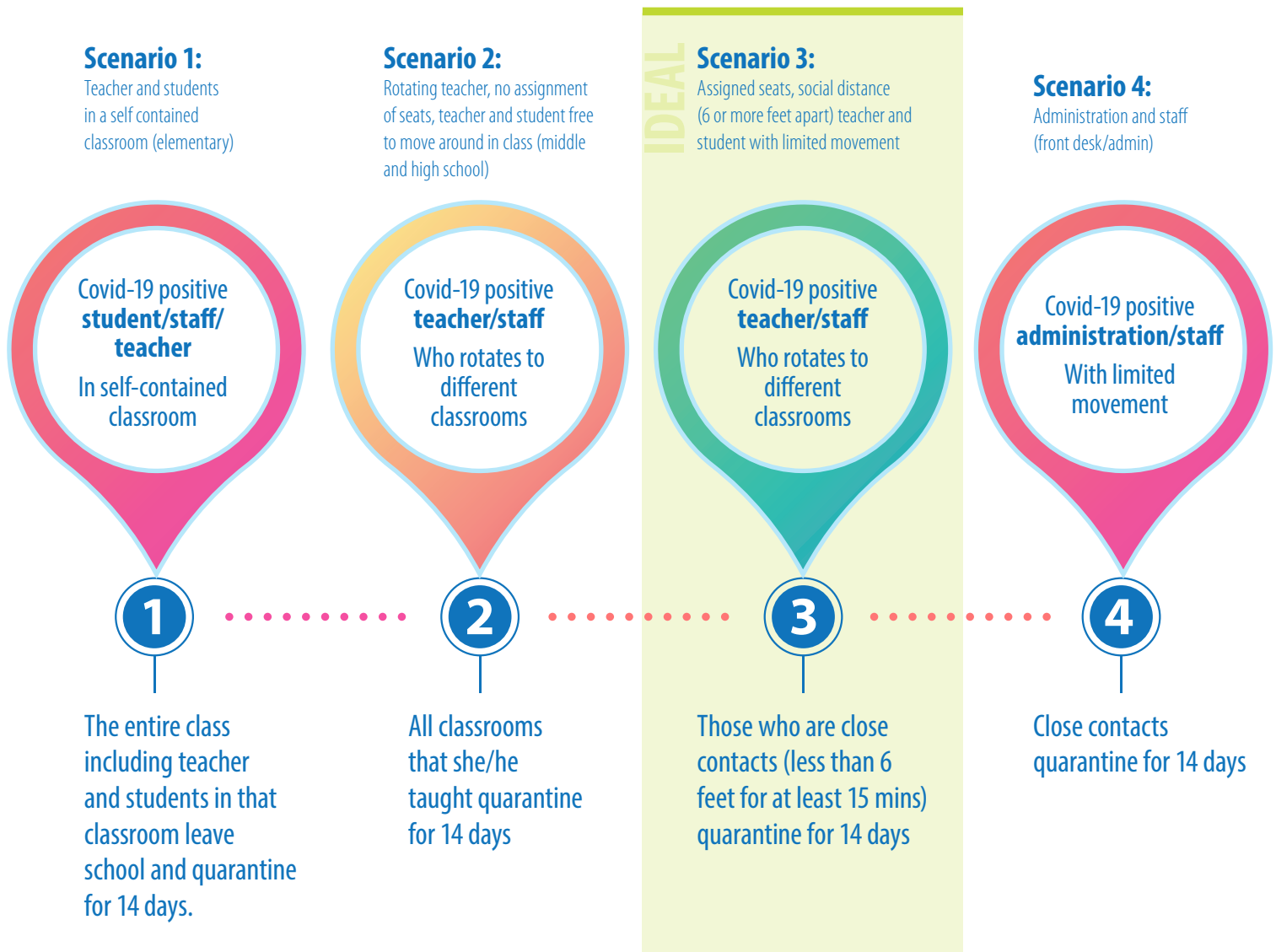




COVID-19 SCHOOL GUIDANCE

Saginaw County  HEALTH DEPARTMENT

SCENARIOS to use when students, staff or teachers are positive for COVID-19



Saginaw County  HEALTH DEPARTMENT

COVID-19 SCHOOL GUIDANCE

Saginaw County



HEALTH DEPARTMENT

SCENARIOS to use when students, staff or teachers are positive for COVID-19

Scenario 5:

Bus with no assigned seating and no clustering of families

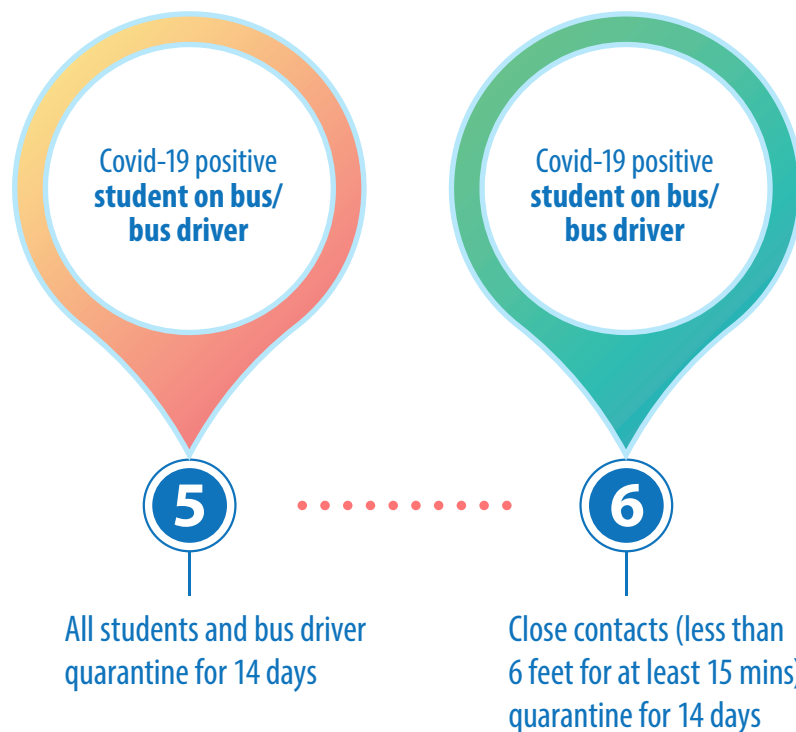
Scenario 6:

Bus with assigned seating, each student remains in his/her seat, windows open

* Seat logs kept

Bus considerations

- Group family members together
- Consider pre-screen prior to getting on the bus
- Parents should be educated that they (responsible adult) should be present when the student gets on the bus
- Sick students should not be allowed on the bus
- Windows slightly open to increase air flow



Saginaw County



HEALTH DEPARTMENT

COVID-19 SCHOOL GUIDANCE

Saginaw County



HEALTH DEPARTMENT

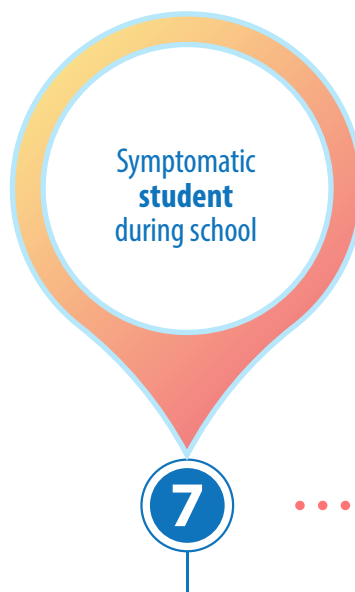
SCENARIOS to use when students, staff or teachers are positive for COVID-19

Isolation room recommendations

- Each sick student should be isolated in a separate room
 - Reduces risk of spread of disease
 - Students could have different disease
 - Flu
 - Common cold
 - Covid-19
 - Staff & child must wear surgical mask
 - Escort child to vehicle, do not allow parent to enter building

Scenario 7:

Symptomatic student in school



- Isolate the student
- Call parents to pick student up
- Student to stay home until symptoms resolve (at least 10 days, no fever for 24 hours, and symptoms improving) and/or see doctor for clearance to return to school
- If child tests positive, close contacts quarantine for 14 days

Scenario 8:

Symptomatic staff in school



- Send adult home
- Stay home until symptoms resolve (at least 10 days, no fever for 24 hours, and symptoms improved) and/or see doctor for clearance to return to school
- If positive, close contacts go on quarantine (see other scenarios)

Saginaw County



HEALTH DEPARTMENT